

AI for semiconductor industry

Czech-Taiwan Electrical and Electronic Industries Workshop
6th May 2021

Veronika Vymětalová
Senior Project Manager

Jan Rygl
CTO



aicheck@aicheck.tech
www.aicheck.tech/en

Semiconductor and AI industry relationship

Semiconductor Industry Leads in Artificial Intelligence Adoption ([Accenture, August 2019](#))

AI Industry

AI has the potential to generate **huge business value for semiconductor companies** at every step of their operations, from research and chip design to production through sales.

([McKinsey&Company, April 2021](#))

symbiotic
relationship

Semiconductor industry

AI industry needs end-to-end solutions for specific industries, ecosystem development, and **innovation** that goes **far beyond improving compute, memory, and networking technologies.**

([McKinsey&Company, December 2018](#))



AI input: Data sources



Sounds

machines, people, environment



Speech

interaction between coworkers,
requests for information and assistance



Sensors outputs

temperature, humidity, luminosity



Images

scanners, sensor outputs

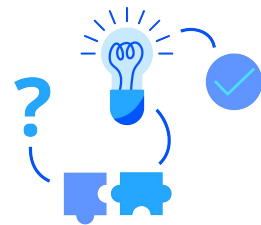


Videos

cameras, mobile phones



Historical data, expert knowledge and other sources of information



AI output: Benefits

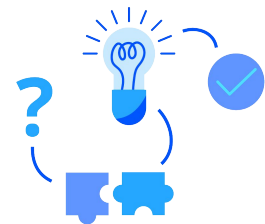
Artificial intelligence is able to process large amount of data, predict outcomes, automate routine tasks, monitor surroundings, news and internet and make decisions.

Quality control

**Predictive
maintenance**

Automatization

Adaptation



AI output: Benefits

Artificial intelligence is able to process large amount of data, predict outcomes, **automate routine tasks**, monitor surroundings, news and internet and **make decisions**.

Quality control

Visual inspection

Machine sound
inspection

Sensors analysis

Predictive
maintenance

Automatization

Adaptation

QA: Visual inspection

Input data

Images from cameras, microscopes, or **scanning-electron microscopes**.
Pair photos with batch IDs.

On-line training of AI model

Batch is reported faulty – models are retrained using images from faulty batch as negative training samples. Other possible faulty batches are identified. Improve over time.

Microscope Valley

Tescan, Delong Instruments, Thermo Fisher Scientific

30% of all electron microscopes is made in Brno



Delong Instruments LVEM

QA: Sound inspection

Input data

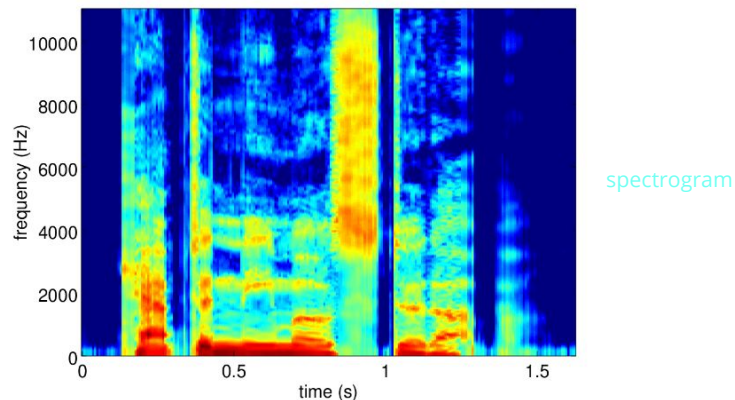
Audio records from microphones close to production lines and machines.

Joined research with [Speech@FIT VUT](#)

Brno VUT university is among **5 top the most influential organization** in speech recognition together with Google, Facebook, IBM and Carnegie Mellon University ([Aminer, April 2021](#))

Anomaly detection

Automatically remove noise made by humans.
Detect anomalies during manufacturing process. Report them, inspect them and learn from them.



QA: Sensors analysis

Input data

Data both from tool operations and the wafer process status. Chamber statuses, robot arm's position, temperature, specifications and human reports (read them and parse them automatically).

Use history to predict future

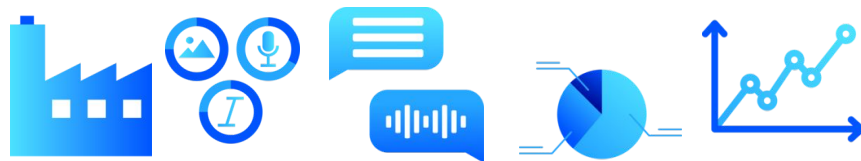
Find out which information affect quality of products and which don't. Learn to predict risky conditions and prevent or compensate for deviation.

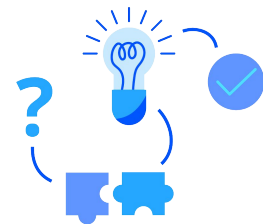
Internal IoT systems

As fabrication is scaling up (from 200mm to 300mm and above), more sensors can appear on tools to increase available data.

Fab's equipment and processes of many different types create a **big data challenge**.

Aggregate information, organize and analyze them and **let system safeguard manufacturing process**.





AI output: Benefits

Artificial intelligence is able to process large amount of data, **predict outcomes**, automate routine tasks, **monitor surroundings**, news and internet and **make decisions**.

Quality control

**Predictive
maintenance**

Machine health

Machine service
and planning

Cost reduction

Automatization

Adaptation

Predictive maintenance

Schedule service and maintenance when needed to save both time and money.

Machine health

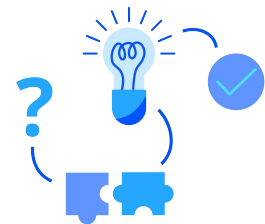
Constantly watch status of hardware and predict outages and forced shutdowns.

Machine service planning

Follow both legal standards and real machine health to plan work of service department.

Cost reduction

Lower risk of outages and purchases planned in advance reduce cost of machine maintenance.



AI output: Benefits

Artificial intelligence is able to process large amount of data, predict outcomes, **automate routine tasks**, monitor surroundings, news and internet and **make decisions**.

Quality control

Predictive
maintenance

Automatization

Work scheduling

Process and task
mining

Semantic
knowledgebase

Adaptation

Automatization

Move your processes to the next level with AI.

Scheduling

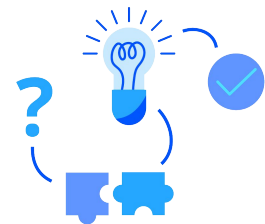
Optimize tasks order, minimize reconfiguration of production lines, react immediately to shortages or changed deadlines.

Process and task mining

Find bottlenecks and inefficiencies in your processes to increase productivity.

Semantic knowledge base

Improve onboarding and enhance performance of teams by tools helping you to know what you do not know (semantic search, scenarios, context).



AI output: Benefits

Artificial intelligence is able to **process large amount of data**, predict outcomes, automate routine tasks, **monitor surroundings, news and internet** and make decisions.

Quality control

Predictive
maintenance

Automatization

Adaptation

Risky behavior
detection

Web monitoring

Human resources

Adaptation

Adapt quickly to changing environments.

Employee risky behaviour detection

Using logs, reports and visual records, detect anomalies in behaviour to prevent risky situations (cluster people by similar job responsibilities).

Web monitoring

Monitor availability and prices of raw materials, financial situation of suppliers and customers using web, news and reports.

Human Resources

Scan web, papers and social networks for people with right skill sets and mindsets for your open job positions.

Questions? Ideas? Feel free to contact us.

Thank you for your attention.

Veronika Vymětalová

veronika.vymetalova@aicheck.tech

Senior project manager

Jan Rygl

jan.rygl@aicheck.tech

CTO



aicheck@aicheck.tech

tailor-made AI solutions
for companies of any size

+420 605 235 151